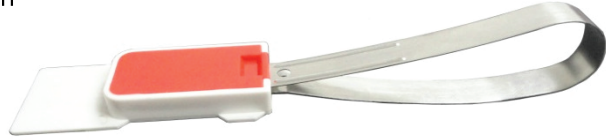


METAPLAS

is a fixed length seal with high breaking strength metal locking mechanism. The stainless steel strap can withstand harsh handling during shipment operation.



Material

- ABS
- Stainless steel strap

Properties

- Average breaking strength – > 35 kg

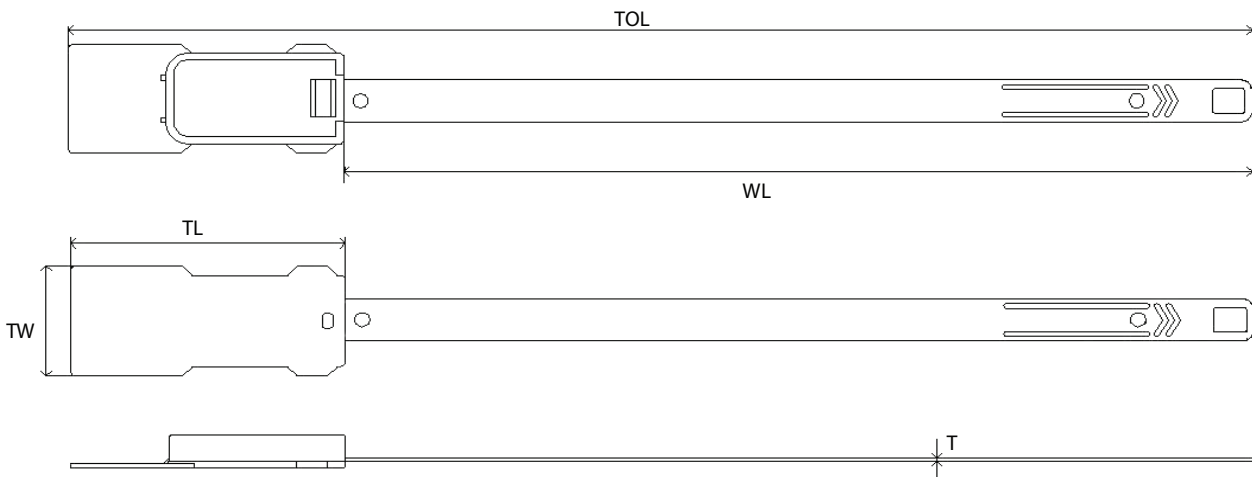
Marking

- Laser marking
- Customize name/logo
- Sequential numbering
- Laser barcoding

Applications

- Tankers
- Retailers
- Chemical drums
- Containers

Product Code	Dimension					Packaging		
	Total Length, TOL (mm)	Working Length, WL (mm)	Thickness, T (mm)	Tag Length, TL (mm)	Tag Width, TW (mm)	Quantity per box (pieces)	Weight per box (kg)	Box Dimension, L x W x H (mm)
MP200ST	240.0	200	0.29	40.0	23.5	1000	8.7	410 x 250 x 185
MP200LT	254.5	200	0.29	54.5	23.5	1000	9.7	352 x 352 x 200



" A S SEAL SECURE YOUR ASSETS "



WESGLOW INDUSTRIES SDN BHD
 Lot 59209, Jalan Karburetor 34/21, Seksyen 34,
 404070 Shah Alam, Selangor Darul Ehsn, Malaysia.
 Tel. : +603 5120 1241 Fax. : +603 5120 1245
 E-mail : sales@wesglow.com
www.wesglow.com



A S Global Business Co.,Ltd.
 159 Soi 01 Kanjanapisek 11/1 Yak 1 Ram Inthra Rd.,
 Kannayao Bangkok 1230 Thailand
 Tel. : +66 2943 1149 Fax. : +66 2943 1672
 Mobile : +66 062 592 2295 ,+66 092 446 6758
 E-mail : Silporachon59@asglobalseal.com
www.asglobalseal.com



Contact : Silporachon