

# RIDGESEAL

is a variable length tightening seal made of high quality plastic material incorporating an engineered plastic jaw as the locking mechanism, making it strong and weather-resistant .



**Material**

- Body – Polypropylene
- Jaw – Polyacetal

**Properties**

- Average breaking strength – 22~28kg

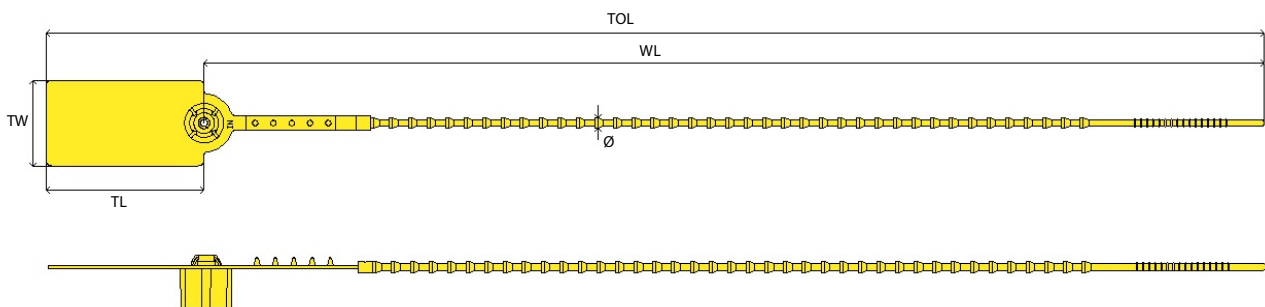
**Marking**

- Laser marking or Hot stamping
- Customize name/logo
- Sequential numbering
- Laser barcoding

**Application**

- Cash bags
- Security containers
- In-land transportation
- Courier bags

Product Code	Dimension					Packaging		
	Total Length, TOL (mm)	Working Length, WL (mm)	Diameter, Ø (mm)	Tag Length, TL (mm)	Tag Width, TW (mm)	Quantity per box (pieces)	Weight per box (kg)	Box Dimension, L x W x H (mm)
RID250	300	250	3.6	50	28	1000	4.8	390 X 313 X 316
RID350	400	350	3.6	50	28	1000	5.5	495 X 313 X 316



**" A S SEAL SECURE YOUR ASSETS "**

