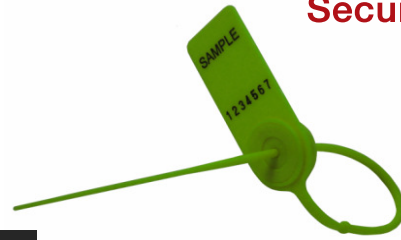


SKYSEAL

is of variable length tightening made of high quality plastic incorporating stainless steel locking mechanism. The strap is smooth and flexible for easier handling and tightening, meanwhile the locking mechanism is strong and weather resistant.

Security Seals



Material

- Body – Polypropylene
- Jaw – Stainless steel

Properties

- Average breaking strength – 11kg

Marking

- Laser marking or Hot stamping
- Customize name/logo
- Sequential numbering
- Laser barcoding

Applications

- Food trolleys
- Automation cash dispensers
- Oil tankers
- Chemical drums

| Product Code | Dimension | | | | | Packaging | | |
|--------------|------------------------|-------------------------|------------------|---------------------|--------------------|---------------------------|---------------------|-------------------------------|
| | Total Length, TOL (mm) | Working Length, WL (mm) | Diameter, Ø (mm) | Tag Length, TL (mm) | Tag Width, TW (mm) | Quantity per box (pieces) | Weight per box (kg) | Box Dimension, L x W x H (mm) |
| SKY150ST | 184 | 150 | 2.0 | 27 | 18 | 1000 | 2.2 | 225 x 213 x 216 |
| SKY150(TBG) | 200 | 150 | 2.2 | 39 | 18 | 1000 | 2.3 | 225 x 213 x 216 |
| SKY200ST | 234 | 200 | 2.0 | 27 | 18 | 1000 | 2.2 | 280 x 215 x 220 |
| SKY200LT | 250 | 200 | 2.0 | 39 | 18 | 1000 | 2.4 | 280 x 215 x 220 |
| SKY210TO | 260 | 210 | 2.2 | 38 | 22 | 1000 | 2.9 | 295 X 245 X 245 |
| SKY210NTO | 260 | 210 | 2.2 | 38 | 22 | 1000 | 2.8 | 295 X 245 X 245 |
| SKY250TO | 300 | 250 | 2.2 | 38 | 22 | 1000 | 3.0 | 380 X 240 X 140 |
| SKY250NTO | 300 | 250 | 2.2 | 38 | 22 | 1000 | 2.9 | 380 X 240 X 140 |
| SKY300TO | 350 | 300 | 2.2 | 38 | 22 | 1000 | 3.2 | 430 X 240 X 140 |
| SKY300NTO | 350 | 300 | 2.2 | 38 | 22 | 1000 | 3.1 | 430 X 240 X 140 |

Note :TBG – Tag with bent groove

ST – Short tag

LT – Long tag

NTO – Non tear off

TO – Tear off

Fig 1: Line Drawing of SKY150ST, SKY150LT, SKY200ST & SKY200LT.



Fig 2: Line Drawing of SKY210TO, SKY250TO & SKY300TO.

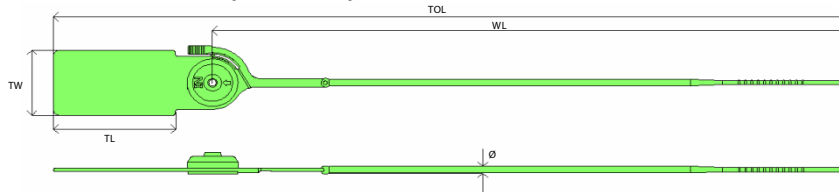
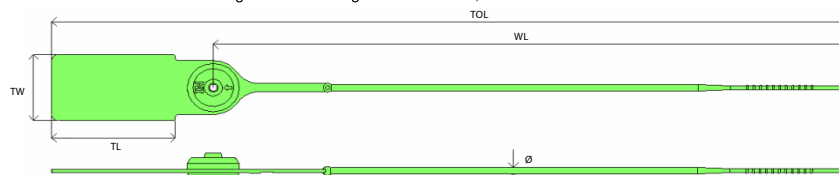


Fig 3: Line Drawing of SKY210NTO, SKY250NTO & SKY300NTO.



" A S SEAL SECURE YOUR ASSETS "

